

Client Name: SHENZHEN CHUANGTONG ELECTRONIC INSTRUMENTS CO., LTD.
Client Address: UNIT 1206-08, 12TH FLOOR, WUZI HOLDING LAND BUILDING, LIYUAN ROAD 6, SUNGANG STREET, SUNXI COMMUNITY, LUOHU DISTRICT, SHENZHEN, GUANGDONG, CHINA

Sample Name: MYTrex PROVE

Tested Basic Model No.: MT-PV22B

The above sample(s) and information were provided by the client.

SGS Job No.: GZP23-008368
Sample Receiving Date: Jul 25, 2023
Verification Period: Jul 25, 2023 ~ Aug 21, 2023
Verification Requested: With reference to RoHS Directive (EU) 2015/863 amending 2011/65/EU.
Verification Method(s): Please refer to next page(s).
Verification Result(s): Please refer to next page(s).

Test Result Summary:

Test Items	Conclusion
EU RoHS Directive (EU) 2015/863 amending Annex II to Directive 2011/65/EU- Lead, Mercury, Cadmium, Hexavalent chromium, Polybrominated biphenyls (PBBs), Polybrominated diphenyl ethers (PBDEs), Bis(2-ethylhexyl) phthalate (DEHP), Butyl benzyl phthalate (BBP), Dibutyl phthalate (DBP) and Diisobutyl phthalate (DIBP)	Pass

Signed for and on behalf of
SGS-CSTC Standards Technical Services Co., Ltd. Guangzhou Branch

Tyler Zhang

Tyler-Y Zhang
Approved Signatory

scan to see the report



D5FAC71C



SGS-CSTC Standards Technical Services Co., Ltd.
Guangzhou Branch Technical Services Laboratory

Unless otherwise agreed in writing, this document is issued by the Company subject to its General Conditions of Service printed overleaf, available on request or accessible at <https://www.sgs.com/en/Terms-and-Conditions>. Attention is drawn to the limitation of liability, indemnification and jurisdiction issues defined therein. Any holder of this document is advised that information contained hereon reflects the Company's findings at the time of its intervention only and within the limits of Client's instructions, if any. The Company's sole responsibility is to its Client and this document does not exonerate parties to a transaction from exercising all their rights and obligations under the transaction documents. This document cannot be reproduced except in full, without prior written approval of the Company. Any unauthorized alteration, forgery or falsification of the content or appearance of this document is unlawful and offenders may be prosecuted to the fullest extent of the law. Unless otherwise stated the results shown in this test report refer only to the sample(s) tested.
Attention: To check the authenticity of testing / inspection report & certificate, please contact us at telephone: (86-755) 8307 1443, or email: CN.Doccheck@sgs.com

No.198, Kezhu Road, Science City, Economic & Technological Development Area, Guangzhou, Guangdong, China 510663
中国·广东·广州高新技术产业开发区科学城科珠路198号 邮编: 510663

t (86-20) 82155555 www.sgs.com.cn
t (86-20) 82155555 sgs.china@sgs.com

Photo of Submitted Sample



MT-PV22B

Verification Method(s):

1. With reference to IEC 62321-2:2021, disassembly and disjointment were performed for the submitted samples.
2. With reference to IEC 62321-1:2013, tests were performed for the samples indicated by the photos in this report.
 - (1) With reference to IEC 62321-3-1:2013, screening by EDXRF spectroscopy.
 - (2) Wet chemical test method: With reference to IEC 62321-4:2013+A1:2017, IEC62321-5:2013, IEC 62321-7-1:2015, IEC 62321-7-2:2017, ISO 17075-1:2017, IEC 62321-6:2015 and IEC62321-8:2017 , analyzed by ICP-OES,UV-Vis and GC-MS.



SGS-CSTC Standards Technical Service Co., Ltd.
Guangzhou Branch Technical Laboratory

Unless otherwise agreed in writing, this document is issued by the Company subject to its General Conditions of Service printed overleaf, available on request or accessible at <https://www.sgs.com/en/Terms-and-Conditions>. Attention is drawn to the limitation of liability, indemnification and jurisdiction issues defined therein. Any holder of this document is advised that information contained hereon reflects the Company's findings at the time of its intervention only and within the limits of Client's instructions, if any. The Company's sole responsibility is to its Client and this document does not exonerate parties to a transaction from exercising all their rights and obligations under the transaction documents. This document cannot be reproduced except in full, without prior written approval of the Company. Any unauthorized alteration, forgery or falsification of the content or appearance of this document is unlawful and offenders may be prosecuted to the fullest extent of the law. Unless otherwise stated the results shown in this test report refer only to the sample(s) tested.

Attention: To check the authenticity of testing /inspection report & certificate, please contact us at telephone: (86-755) 8307 1443, or email: CN.Doccheck@sgs.com

No.198, Kezhu Road, Science City, Economic & Technological Development Area, Guangzhou, Guangdong, China 510663
中国·广东·广州高新技术产业开发区科学城科珠路198号 邮编: 510663

t (86-20) 82155555 www.sgsgroup.com.cn
t (86-20) 82155555 sgs.china@sgs.com

Verification Part Description:

SN ID	Sample No.	SGS Sample ID	Description
SN1	A1	CAN23-0068771-0001.C001	Silvery adhesive metal sheet
SN2	A2	CAN23-0068771-0001.C002	Black plastic shell
SN3	A3	CAN23-0068771-0001.C003	Black plastic (wire insulation)
SN4	A4	CAN23-0068771-0001.C004	Silvery magnet
SN5	A5	CAN23-0068771-0001.C005	White plastic part
SN6	A6	CAN23-0068771-0001.C006	Grey translucent plastic part
SN7	A7	CAN23-0068771-0001.C007	Transparent plastic part
SN8	A8	CAN23-0068771-0001.C008	Light blue surfaced metal screw
SN9	A9	CAN23-0068771-0001.C009	Black rubber part
SN10	A10	CAN23-0068771-0001.C010	Black plastic part
SN11	A11	CAN23-0068771-0001.C011	Black plastic part
SN12	A12	CAN23-0068771-0001.C012	Silvery metal plating
SN13	A13	CAN23-0068771-0001.C013	Beige plastic frame (base)
SN14	A14	CAN23-0068771-0001.C014	Black adhesive sponge part
SN15	A15	CAN23-0068771-0001.C015	Silvery metal plating
SN16	A16	CAN23-0068771-0001.C016	Black plastic shell with white printing
SN17	A17	CAN23-0068771-0001.C017	Beige plastic ring (base)
SN18	A18	CAN23-0068771-0001.C018	Yellow plastic shell with black printing
SN19	A19	CAN23-0068771-0001.C019	Black rubber cover
SN20	A20	CAN23-0068771-0001.C020	Black rubber part
SN21	A21	CAN23-0068771-0001.C021	White plastic socket
SN22	A22	CAN23-0068771-0001.C022	White plastic socket
SN23	A23	CAN23-0068771-0001.C023	Black plastic button
SN24	A24	CAN23-0068771-0001.C024	Black plastic part
SN25	A25	CAN23-0068771-0001.C025	Golden metal pin
SN26	A26	CAN23-0068771-0001.C026	Golden metal part
SN27	A27	CAN23-0068771-0001.C027	Black plastic (wire insulation)
SN28	A28	CAN23-0068771-0001.C028	Red plastic (wire insulation)
SN29	A29	CAN23-0068771-0001.C029	Red plastic (wire insulation)
SN30	A30	CAN23-0068771-0001.C030	Black plastic (wire insulation)
SN31	A31	CAN23-0068771-0001.C031	Yellow plastic (wire insulation)
SN32	A32	CAN23-0068771-0001.C032	Silvery metal terminal
SN33	A33	CAN23-0068771-0001.C033	Black rubber sheet
SN34	A34	CAN23-0068771-0001.C034	Black plastic part
SN35	A35	CAN23-0068771-0001.C035	Black plastic part
SN36	A36	CAN23-0068771-0001.C036	Silvery metal solder
SN37	A37	CAN23-0068771-0001.C037	White "PCB"
SN38	A38	CAN23-0068771-0001.C038	White plastic housing
SN39	A39	CAN23-0068771-0001.C039	Black body
SN40	A40	CAN23-0068771-0001.C040	White plastic housing
SN41	A41	CAN23-0068771-0001.C041	Silvery metal part
SN42	A42	CAN23-0068771-0001.C042	White glue
SN43	A43	CAN23-0068771-0001.C043	Dark grey plastic part
SN44	A44	CAN23-0068771-0001.C044	Silvery metal pin
SN45	A45	CAN23-0068771-0001.C045	Silvery metal pin
SN46	A46	CAN23-0068771-0001.C046	White plastic (flat cable jacket) with blue printing
SN47	A47	CAN23-0068771-0001.C047	Black body



SGS-CST Standards Technical Services Co., Ltd.
Guangzhou Branch / 广州分公司

Unless otherwise agreed in writing, this document is issued by the Company subject to its General Conditions of Service printed overleaf, available on request or accessible at <https://www.sgs.com/en/Terms-and-Conditions>. Attention is drawn to the limitation of liability, indemnification and jurisdiction issues defined therein. Any holder of this document is advised that information contained hereon reflects the Company's findings at the time of its intervention only and within the limits of Client's instructions, if any. The Company's sole responsibility is to its Client and this document does not exonerate parties to a transaction from exercising all their rights and obligations under the transaction documents. This document cannot be reproduced except in full, without prior written approval of the Company. Any unauthorized alteration, forgery or falsification of the content or appearance of this document is unlawful and offenders may be prosecuted to the fullest extent of the law. Unless otherwise stated the results shown in this test report refer only to the sample(s) tested.
Attention: To check the authenticity of testing / inspection report & certificate, please contact us at telephone: (86-755) 83071443, or email: CN.Doccheck@sgs.com

No.198, Kezhu Road, Science City, Economic & Technological Development Area, Guangzhou, Guangdong, China 510663
中国·广东·广州高新技术产业开发区科学城珠路198号 邮编: 510663

t (86-20) 82155555 www.sgsgroup.com.cn
t (86-20) 82155555 sgs.china@sgs.com

SN ID	Sample No.	SGS Sample ID	Description
SN48	A48	CAN23-0068771-0001.C048	White "PCB"
SN49	A49	CAN23-0068771-0001.C049	Blue plastic sheet with black printing
SN50	A50	CAN23-0068771-0001.C050	Beige plastic housing
SN51	A51	CAN23-0068771-0001.C051	Silvery metal part
SN52	A52	CAN23-0068771-0001.C052	Silvery metal pin
SN53	A53	CAN23-0068771-0001.C053	Light blue surfaced metal screw
SN54	A54	CAN23-0068771-0001.C054	Yellow adhesive plastic sheet
SN55	A55	CAN23-0068771-0001.C055	White plastic part
SN56	A56	CAN23-0068771-0001.C056	White plastic housing
SN57	A57	CAN23-0068771-0001.C057	White "PCB"
SN58	A58	CAN23-0068771-0001.C058	Silvery metal solder
SN59	A59	CAN23-0068771-0001.C059	Black body
SN60	A60	CAN23-0068771-0001.C060	Silvery metal part
SN61	A61	CAN23-0068771-0001.C061	Silvery metal terminal
SN62	A62	CAN23-0068771-0001.C062	Silvery metal screw
SN63	A63	CAN23-0068771-0001.C063	Black plastic (wire insulation)
SN64	A64	CAN23-0068771-0001.C064	Red plastic (wire insulation)
SN65	A65	CAN23-0068771-0001.C065	Black metal plating
SN66	A66	CAN23-0068771-0001.C066	Black plastic frame
SN67	A67	CAN23-0068771-0001.C067	Beige plastic part (base)
SN68	A68	CAN23-0068771-0001.C068	White "PCB"
SN69	A69	CAN23-0068771-0001.C069	Black plastic shell
SN70	A70	CAN23-0068771-0001.C070	Red plastic (wire insulation)
SN71	A71	CAN23-0068771-0001.C071	Black plastic (wire insulation)
SN72	A72	CAN23-0068771-0001.C072	Red plastic (wire insulation)
SN73	A73	CAN23-0068771-0001.C073	Silvery metal terminal
SN74	A74	CAN23-0068771-0001.C074	Silvery metal solder
SN75	A75	CAN23-0068771-0001.C075	Transparent plastic part
SN76	A76	CAN23-0068771-0001.C076	Silvery magnet
SN77	A77	CAN23-0068771-0001.C077	Yellow transparent plastic part
SN78	A78	CAN23-0068771-0001.C078	Black plastic shell
SN79	A79	CAN23-0068771-0001.C079	Black metal plating
SN80	A80	CAN23-0068771-0001.C080	White plastic sheet
SN81	A81	CAN23-0068771-0001.C081	Transparent plastic sheet with blue printing
SN82	A82	CAN23-0068771-0001.C082	Black plastic part
SN83	A83	CAN23-0068771-0001.C083	Beige plastic part (base)
SN84	A84	CAN23-0068771-0001.C084	Beige plastic frame (base)
SN85	A85	CAN23-0068771-0001.C085	Black adhesive plastic sheet
SN86	A86	CAN23-0068771-0001.C086	Silvery surfaced adhesive plastic sheet
SN87	A87	CAN23-0068771-0001.C087	Transparent adhesive plastic sheet
SN88	A88	CAN23-0068771-0001.C088	Silvery metal solder
SN89	A89	CAN23-0068771-0001.C089	White "PCB"
SN90	A90	CAN23-0068771-0001.C090	Black plastic shell
SN91	A91	CAN23-0068771-0001.C091	White "PCB"
SN92	A92	CAN23-0068771-0001.C092	Silvery metal solder
SN93	A93	CAN23-0068771-0001.C093	Black plastic shell with white printing
SN94	A94	CAN23-0068771-0001.C094	Black rubber part
SN95	A95	CAN23-0068771-0001.C095	Silvery metal part



SGS-CSTC Standards Technical Services Co., Ltd.
Guangzhou Branch / 广州分公司技术实验室

Unless otherwise agreed in writing, this document is issued by the Company subject to its General Conditions of Service printed overleaf, available on request or accessible at <https://www.sgs.com/en/Terms-and-Conditions>. Attention is drawn to the limitation of liability, indemnification and jurisdiction issues defined therein. Any holder of this document is advised that information contained herein reflects the Company's findings at the time of its intervention only and within the limits of Client's instructions, if any. The Company's sole responsibility is to its Client and this document does not exonerate parties to a transaction from exercising all their rights and obligations under the transaction documents. This document cannot be reproduced except in full, without prior written approval of the Company. Any unauthorized alteration, forgery or falsification of the content or appearance of this document is unlawful and offenders may be prosecuted to the fullest extent of the law. Unless otherwise stated the results shown in this test report refer only to the sample(s) tested.
Attention: To check the authenticity of testing / inspection report & certificate, please contact us at telephone: (86-755) 8307 1443, or email: CN.Doccheck@sgs.com

No.198, Kezhu Road, Science City, Economic & Technological Development Area, Guangzhou, Guangdong, China 510663
中国·广东·广州高新技术产业开发区科学城珠路198号 邮编: 510663

t (86-20) 82155555 www.sgsgroup.com.cn
t (86-20) 82155555 sgs.china@sgs.com

SN ID	Sample No.	SGS Sample ID	Description
SN96	A96	CAN23-0068771-0001.C096	Black plastic sheet
SN97	A97	CAN23-0068771-0001.C097	Blue surfaced plastic sheet
SN98	A98	CAN23-0068771-0001.C098	Silvery surfaced plastic sheet
SN99	A99	CAN23-0068771-0001.C099	Grey translucent plastic part
SN100	A100	CAN23-0068771-0001.C100	Black plastic frame
SN101	A101	CAN23-0068771-0001.C101	White "PCB"
SN102	A102	CAN23-0068771-0001.C102	Silvery metal solder
SN103	A103	CAN23-0068771-0001.C103	White plastic part
SN104	A104	CAN23-0068771-0001.C104	Golden metal pin
SN105	A105	CAN23-0068771-0001.C105	Golden metal part
SN106	A106	CAN23-0068771-0001.C106	White plastic shell with white printing
SN107	A107	CAN23-0068771-0001.C107	Black plastic part
SN108	A108	CAN23-0068771-0001.C108	Black surfaced metal part
SN109	A109	CAN23-0068771-0001.C109	Black adhesive rubber sheet
SN110	A110	CAN23-0068771-0001.C110	Black plastic part
SN111	A111	CAN23-0068771-0001.C111	Golden metal pin
SN112	A112	CAN23-0068771-0001.C112	Silvery metal frame
SN113	A113	CAN23-0068771-0001.C113	Golden metal part
SN114	A114	CAN23-0068771-0001.C114	Dark grey plastic part
SN115	A115	CAN23-0068771-0001.C115	Golden metal pin
SN116	A116	CAN23-0068771-0001.C116	White "PCB"
SN117	A117	CAN23-0068771-0001.C117	Silvery metal solder
SN118	A118	CAN23-0068771-0001.C118	Black plastic shell with white printing
SN119	A119	CAN23-0068771-0001.C119	Black plastic part
SN120	A120	CAN23-0068771-0001.C120	Black plastic (cable jacket) with white printing
SN121	A121	CAN23-0068771-0001.C121	Black plastic shell
SN122	A122	CAN23-0068771-0001.C122	Red plastic (wire insulation)
SN123	A123	CAN23-0068771-0001.C123	Black plastic (wire insulation)
SN124	A124	CAN23-0068771-0001.C124	Silvery metal frame
SN125	A125	CAN23-0068771-0001.C125	Dark grey plastic part
SN126	A126	CAN23-0068771-0001.C126	Silvery metal solder
SN127	A127	CAN23-0068771-0001.C127	Silvery metal pin
SN128	A128	CAN23-0068771-0001.C128	Black plastic part
SN129	A129	CAN23-0068771-0001.C129	White glue
SN130	A130	CAN23-0068771-0001.C130	Yellow adhesive plastic sheet
SN131	A131	CAN23-0068771-0001.C131	Black plastic tube
SN132	A132	CAN23-0068771-0001.C132	White translucent plastic tube
SN133	A133	CAN23-0068771-0001.C133	Yellow surfaced metal wire
SN134	A134	CAN23-0068771-0001.C134	Black plastic part
SN135	A135	CAN23-0068771-0001.C135	Black plastic shell with white printing
SN136	A136	CAN23-0068771-0001.C136	Silvery metal shell with red printing
SN137	A137	CAN23-0068771-0001.C137	Black rubber cover
SN138	A138	CAN23-0068771-0001.C138	Brown translucent adhesive plastic sheet
SN139	A139	CAN23-0068771-0001.C139	Black rubber cover
SN140	A140	CAN23-0068771-0001.C140	Silvery metal part
SN141	A141	CAN23-0068771-0001.C141	Black plastic (heat shrinkable tube) with white printing
SN142	A142	CAN23-0068771-0001.C142	Green body with multicolor printing



Unless otherwise agreed in writing, this document is issued by the Company subject to its General Conditions of Service printed overleaf, available on request or accessible at <https://www.sgs.com/en/Terms-and-Conditions>. Attention is drawn to the limitation of liability, indemnification and jurisdiction issues defined therein. Any holder of this document is advised that information contained hereon reflects the Company's findings at the time of its intervention only and within the limits of Client's instructions, if any. The Company's sole responsibility is to its Client and this document does not exonerate parties to a transaction from exercising all their rights and obligations under the transaction documents. This document cannot be reproduced except in full, without prior written approval of the Company. Any unauthorized alteration, forgery or falsification of the content or appearance of this document is unlawful and offenders may be prosecuted to the fullest extent of the law. Unless otherwise stated the results shown in this test report refer only to the sample(s) tested.

Attention: To check the authenticity of testing / inspection report & certificate, please contact us at telephone: (86-755) 8307 1443, or email: CN.Doccheck@sgs.com

SN ID	Sample No.	SGS Sample ID	Description
SN143	A143	CAN23-0068771-0001.C143	Black body
SN144	A144	CAN23-0068771-0001.C144	Black body
SN145	A145	CAN23-0068771-0001.C145	Black body
SN146	A146	CAN23-0068771-0001.C146	Silvery metal solder
SN147	A147	CAN23-0068771-0001.C147	Green "PCB"
SN148	A148	CAN23-0068771-0001.C148	Silvery metal pin
SN149	A149	CAN23-0068771-0001.C149	Silvery metal pin



Unless otherwise agreed in writing, this document is issued by the Company subject to its General Conditions of Service printed overleaf, available on request or accessible at <https://www.sgs.com/en/Terms-and-Conditions>. Attention is drawn to the limitation of liability, indemnification and jurisdiction issues defined therein. Any holder of this document is advised that information contained hereon reflects the Company's findings at the time of its intervention only and within the limits of Client's instructions, if any. The Company's sole responsibility is to its Client and this document does not exonerate parties to a transaction from exercising all their rights and obligations under the transaction documents. This document cannot be reproduced except in full, without prior written approval of the Company. Any unauthorized alteration, forgery or falsification of the content or appearance of this document is unlawful and offenders may be prosecuted to the fullest extent of the law. Unless otherwise stated the results shown in this test report refer only to the sample(s) tested.

Attention: To check the authenticity of testing / inspection report & certificate, please contact us at telephone: (86-755) 8307 1443, or email: CN.Doccheck@sgs.com

SGS-CTC Standards Technical Services Co., Ltd.
Guangzhou Branch / Science City Technical Laboratory

No.198, Kezhu Road, Science City, Economic & Technological Development Area, Guangzhou, Guangdong, China 510663
中国·广东·广州高新技术产业开发区科学城科珠路198号 邮编: 510663

t (86-20) 82155555 www.sgsgroup.com.cn
t (86-20) 82155555 sgs.china@sgs.com

Verification Result(s):

In accordance with the result of material risk assessment, the following disjointed parts in the submitted sample have been verified. (Unless otherwise specified, the unit is mg/kg).

Test Item(s)	A1	A2	A3	A4	A5	A6	A7	A8
Cd	BL	BL	BL	BL	BL	BL	BL	BL
Pb	BL	BL	BL	BL	BL	BL	BL	BL
Hg	BL	BL	BL	BL	BL	BL	BL	BL
Cr(VI)▼	ND	BL	BL	ND	BL	BL	BL	BL
PBBs	---	BL	BL	BL	BL	BL	BL	---
PBDEs	---	BL	BL	BL	BL	BL	BL	---
DBP	---	BL	ND	---	BL	BL	BL	---
BBP	---	BL	ND	---	BL	BL	BL	---
DEHP	---	BL	ND	---	BL	BL	BL	---
DIBP	---	BL	ND	---	BL	BL	BL	---
Conclusion	PASS	PASS	PASS	PASS	PASS	PASS	PASS	PASS

Test Item(s)	A9	A10	A11	A12	A13	A14	A15	A16
Cd	BL	BL	BL	BL	BL	BL	BL	BL
Pb	BL	BL	BL	BL	BL	BL	BL	BL
Hg	BL	BL	BL	BL	BL	BL	BL	BL
Cr(VI)▼	BL	BL	BL	ND	BL	BL	ND	BL
PBBs	BL	BL	BL	---	BL	BL	---	BL
PBDEs	BL	BL	BL	---	BL	BL	---	BL
DBP	ND	BL	BL	---	BL	ND	---	BL
BBP	ND	BL	BL	---	BL	ND	---	BL
DEHP	ND	BL	BL	---	BL	ND	---	BL
DIBP	ND	BL	BL	---	BL	ND	---	BL
Conclusion	PASS	PASS	PASS	PASS	PASS	PASS	PASS	PASS

Test Item(s)	A17	A18	A19	A20	A21	A22	A23	A24
Cd	BL	BL	BL	BL	BL	BL	BL	BL
Pb	BL	BL	BL	BL	BL	BL	BL	BL
Hg	BL	BL	BL	BL	BL	BL	BL	BL
Cr(VI)▼	BL	BL	BL	BL	BL	BL	BL	BL
PBBs	BL	BL	BL	BL	ND	BL	BL	BL
PBDEs	BL	BL	BL	BL	ND	BL	BL	BL
DBP	BL	BL	ND	ND	ND	BL	BL	BL
BBP	BL	BL	ND	ND	ND	BL	BL	BL
DEHP	BL	BL	ND	ND	ND	BL	BL	BL
DIBP	BL	BL	ND	ND	ND	BL	BL	BL
Conclusion	PASS	PASS	PASS	PASS	PASS	PASS	PASS	PASS

Test Item(s)	A25	A26	A27	A28	A29	A30	A31	A32
Cd	BL	BL	BL	BL	BL	BL	BL	BL
Pb	<40000▲	<40000▲	BL	BL	BL	BL	BL	BL
Hg	BL	BL	BL	BL	BL	BL	BL	BL
Cr(VI)▼	BL	BL	BL	BL	BL	BL	BL	BL



SGS-CSI Standards Technical Services Co., Ltd.
Guangzhou Branch Technical Laboratory

Unless otherwise agreed in writing, this document is issued by the Company subject to its General Conditions of Service printed overleaf, available on request or accessible at <https://www.sgs.com/en/Terms-and-Conditions>. Attention is drawn to the limitation of liability, indemnification and jurisdiction issues defined therein. Any holder of this document is advised that information contained hereon reflects the Company's findings at the time of its intervention only and within the limits of Client's instructions, if any. The Company's sole responsibility is to its Client and this document does not exonerate parties to a transaction from exercising all their rights and obligations under the transaction documents. This document cannot be reproduced except in full, without prior written approval of the Company. Any unauthorized alteration, forgery or falsification of the content or appearance of this document is unlawful and offenders may be prosecuted to the fullest extent of the law. Unless otherwise stated the results shown in this test report refer only to the sample(s) tested.
Attention: To check the authenticity of testing / inspection report & certificate, please contact us at telephone: (86-755) 8307 1443, or email: CN.Doccheck@sgs.com

No.198, Kezhu Road, Science City, Economic & Technological Development Area, Guangzhou, Guangdong, China 510663
中国·广东·广州高新技术产业开发区科学城珠路198号 邮编: 510663

t (86-20) 82155555 www.sgsgroup.com.cn
t (86-20) 82155555 sgs.china@sgs.com

Test Item(s)	A25	A26	A27	A28	A29	A30	A31	A32
PBBs	---	---	BL	BL	BL	BL	BL	---
PBDEs	---	---	BL	BL	BL	BL	BL	---
DBP	---	---	ND	ND	ND	ND	108	---
BBP	---	---	ND	ND	ND	ND	ND	---
DEHP	---	---	ND	ND	ND	ND	ND	---
DIBP	---	---	ND	ND	ND	ND	ND	---
Conclusion	PASS	PASS	PASS	PASS	PASS	PASS	PASS	PASS

Test Item(s)	A33	A34	A35	A36	A37	A38	A39	A40
Cd	BL	BL	BL	BL	BL	BL	BL	BL
Pb	BL	BL	BL	BL	BL	BL	BL	BL
Hg	BL	BL	BL	BL	BL	BL	BL	BL
Cr(VI)▼	BL	BL	BL	BL	BL	BL	BL	BL
PBBs	BL	BL	BL	---	ND	BL	BL	BL
PBDEs	BL	BL	BL	---	ND	BL	BL	BL
DBP	ND	BL	BL	---	ND	BL	BL	BL
BBP	ND	BL	BL	---	ND	BL	BL	BL
DEHP	ND	BL	BL	---	ND	BL	BL	BL
DIBP	ND	BL	BL	---	ND	BL	BL	BL
Conclusion	PASS	PASS	PASS	PASS	PASS	PASS	PASS	PASS

Test Item(s)	A41	A42	A43	A44	A45	A46	A47	A48
Cd	BL	BL	BL	BL	BL	BL	BL	BL
Pb	BL	BL	BL	BL	BL	BL	BL	BL
Hg	BL	BL	BL	BL	BL	BL	BL	BL
Cr(VI)▼	BL	BL	BL	BL	BL	BL	BL	BL
PBBs	---	ND	BL	---	---	ND	BL	ND
PBDEs	---	ND	BL	---	---	ND	BL	ND
DBP	---	ND	BL	---	---	ND	BL	ND
BBP	---	ND	BL	---	---	ND	BL	ND
DEHP	---	ND	BL	---	---	ND	BL	ND
DIBP	---	ND	BL	---	---	ND	BL	ND
Conclusion	PASS	PASS	PASS	PASS	PASS	PASS	PASS	PASS

Test Item(s)	A49	A50	A51	A52	A53	A54	A55	A56
Cd	BL	BL	BL	BL	BL	BL	BL	BL
Pb	BL	BL	BL	BL	BL	BL	BL	BL
Hg	BL	BL	BL	BL	BL	BL	BL	BL
Cr(VI)▼	BL	BL	BL	BL	BL	BL	BL	BL
PBBs	BL	BL	---	---	---	BL	ND	BL
PBDEs	BL	BL	---	---	---	BL	ND	BL
DBP	BL	BL	---	---	---	ND	ND	BL
BBP	BL	BL	---	---	---	ND	ND	BL
DEHP	BL	BL	---	---	---	ND	ND	BL
DIBP	BL	BL	---	---	---	ND	ND	BL
Conclusion	PASS	PASS	PASS	PASS	PASS	PASS	PASS	PASS



Unless otherwise agreed in writing, this document is issued by the Company subject to its General Conditions of Service printed overleaf, available on request or accessible at <https://www.sgs.com/en/Terms-and-Conditions>. Attention is drawn to the limitation of liability, indemnification and jurisdiction issues defined therein. Any holder of this document is advised that information contained hereon reflects the Company's findings at the time of its intervention only and within the limits of Client's instructions, if any. The Company's sole responsibility is to its Client and this document does not exonerate parties to a transaction from exercising all their rights and obligations under the transaction documents. This document cannot be reproduced except in full, without prior written approval of the Company. Any unauthorized alteration, forgery or falsification of the content or appearance of this document is unlawful and offenders may be prosecuted to the fullest extent of the law. Unless otherwise stated the results shown in this test report refer only to the sample(s) tested.

Attention: To check the authenticity of testing / inspection report & certificate, please contact us at telephone: (86-755) 8307 1443, or email: CN.Doccheck@sgs.com

Test Item(s)	A57	A58	A59	A60	A61	A62	A63	A64
Cd	BL	BL	BL	BL	BL	BL	BL	BL
Pb	BL	BL	BL	BL	BL	BL	BL	BL
Hg	BL	BL	BL	BL	BL	BL	BL	BL
Cr(VI)▼	BL	BL	BL	ND	BL	BL	BL	BL
PBBs	ND	---	BL	---	---	---	BL	BL
PBDEs	ND	---	BL	---	---	---	BL	BL
DBP	ND	---	BL	---	---	---	302	179
BBP	ND	---	BL	---	---	---	ND	ND
DEHP	ND	---	BL	---	---	---	ND	ND
DIBP	ND	---	BL	---	---	---	ND	ND
Conclusion	PASS	PASS	PASS	PASS	PASS	PASS	PASS	PASS

Test Item(s)	A65	A66	A67	A68	A69	A70	A71	A72
Cd	BL	BL	BL	BL	BL	BL	BL	BL
Pb	BL	BL	BL	BL	BL	BL	BL	BL
Hg	BL	BL	BL	BL	BL	BL	BL	BL
Cr(VI)▼	ND	BL	BL	BL	BL	BL	BL	BL
PBBs	---	BL	BL	ND	BL	BL	BL	BL
PBDEs	---	BL	BL	ND	BL	BL	BL	BL
DBP	---	BL	BL	ND	BL	ND	ND	ND
BBP	---	BL	BL	ND	BL	ND	ND	ND
DEHP	---	BL	BL	ND	BL	ND	ND	ND
DIBP	---	BL	BL	ND	BL	ND	ND	ND
Conclusion	PASS	PASS	PASS	PASS	PASS	PASS	PASS	PASS

Test Item(s)	A73	A74	A75	A76	A77	A78	A79	A80
Cd	BL	BL	BL	BL	BL	BL	BL	BL
Pb	BL	BL	BL	BL	BL	BL	BL	BL
Hg	BL	BL	BL	BL	BL	BL	BL	BL
Cr(VI)▼	BL	BL	BL	BL	BL	BL	ND	BL
PBBs	---	---	BL	BL	BL	BL	---	BL
PBDEs	---	---	BL	BL	BL	BL	---	BL
DBP	---	---	BL	---	BL	BL	---	BL
BBP	---	---	BL	---	BL	BL	---	BL
DEHP	---	---	BL	---	BL	BL	---	BL
DIBP	---	---	BL	---	BL	BL	---	BL
Conclusion	PASS	PASS	PASS	PASS	PASS	PASS	PASS	PASS

Test Item(s)	A81	A82	A83	A84	A85	A86	A87	A88
Cd	BL	BL	BL	BL	BL	BL	BL	BL
Pb	BL	BL	BL	BL	BL	BL	BL	BL
Hg	BL	BL	BL	BL	BL	BL	BL	BL
Cr(VI)▼	BL	BL	BL	BL	BL	BL	BL	BL
PBBs	BL	BL	BL	BL	BL	BL	BL	---



SGS-CSI Standards Technical Services Co., Ltd.
Guangzhou Branch / 广州分公司

Unless otherwise agreed in writing, this document is issued by the Company subject to its General Conditions of Service printed overleaf, available on request or accessible at <https://www.sgs.com/en/Terms-and-Conditions>. Attention is drawn to the limitation of liability, indemnification and jurisdiction issues defined therein. Any holder of this document is advised that information contained hereon reflects the Company's findings at the time of its intervention only and within the limits of Client's instructions, if any. The Company's sole responsibility is to its Client and this document does not exonerate parties to a transaction from exercising all their rights and obligations under the transaction documents. This document cannot be reproduced except in full, without prior written approval of the Company. Any unauthorized alteration, forgery or falsification of the content or appearance of this document is unlawful and offenders may be prosecuted to the fullest extent of the law. Unless otherwise stated the results shown in this test report refer only to the sample(s) tested.
Attention: To check the authenticity of testing / inspection report & certificate, please contact us at telephone: (86-755) 8307 1443, or email: CN.Doccheck@sgs.com

No.198, Kezhu Road, Science City, Economic & Technological Development Area, Guangzhou, Guangdong, China 510663
中国·广东·广州高新技术产业开发区科学城科珠路198号 邮编: 510663

t (86-20) 82155555 www.sgsgroup.com.cn
t (86-20) 82155555 sgs.china@sgs.com

Test Item(s)	A81	A82	A83	A84	A85	A86	A87	A88
PBDEs	BL	BL	BL	BL	BL	BL	BL	---
DBP	BL	BL	BL	BL	ND	ND	ND	---
BBP	BL	BL	BL	BL	ND	ND	ND	---
DEHP	BL	BL	BL	BL	ND	ND	119	---
DIBP	BL	BL	BL	BL	ND	ND	ND	---
Conclusion	PASS	PASS	PASS	PASS	PASS	PASS	PASS	PASS

Test Item(s)	A89	A90	A91	A92	A93	A94	A95	A96
Cd	BL	BL	BL	BL	BL	BL	BL	BL
Pb	BL	BL	BL	BL	BL	BL	BL	BL
Hg	BL	BL	BL	BL	BL	BL	BL	BL
Cr(VI)▼	BL	BL	BL	BL	BL	BL	ND	BL
PBBs	ND	BL	ND	---	BL	BL	---	BL
PBDEs	ND	BL	ND	---	BL	BL	---	BL
DBP	ND	BL	ND	---	BL	ND	---	BL
BBP	ND	BL	ND	---	BL	ND	---	BL
DEHP	ND	BL	ND	---	BL	ND	---	BL
DIBP	ND	BL	ND	---	BL	ND	---	BL
Conclusion	PASS	PASS	PASS	PASS	PASS	PASS	PASS	PASS

Test Item(s)	A97	A98	A99	A100	A101	A102	A103	A104
Cd	BL	BL	BL	BL	BL	BL	BL	BL
Pb	BL	BL	BL	BL	BL	BL	BL	<40000▲
Hg	BL	BL	BL	BL	BL	BL	BL	BL
Cr(VI)▼	BL	BL	BL	BL	BL	BL	BL	BL
PBBs	BL	BL	BL	BL	ND	---	BL	---
PBDEs	BL	BL	BL	BL	ND	---	BL	---
DBP	BL	BL	BL	BL	ND	---	BL	---
BBP	BL	BL	BL	BL	ND	---	BL	---
DEHP	BL	BL	BL	BL	ND	---	BL	---
DIBP	BL	BL	BL	BL	ND	---	BL	---
Conclusion	PASS	PASS	PASS	PASS	PASS	PASS	PASS	PASS

Test Item(s)	A105	A106	A107	A108	A109	A110	A111	A112
Cd	BL	BL	BL	BL	BL	BL	BL	BL
Pb	<40000▲	BL	BL	BL	BL	BL	<40000▲	BL
Hg	BL	BL	BL	BL	BL	BL	BL	BL
Cr(VI)▼	BL	BL	BL	BL	BL	BL	BL	ND
PBBs	---	BL	BL	---	BL	BL	---	---
PBDEs	---	BL	BL	---	BL	BL	---	---
DBP	---	BL	BL	---	ND	BL	---	---
BBP	---	BL	BL	---	ND	BL	---	---
DEHP	---	BL	BL	---	ND	BL	---	---
DIBP	---	BL	BL	---	ND	BL	---	---
Conclusion	PASS	PASS	PASS	PASS	PASS	PASS	PASS	PASS



SGS-CSTC Standards Technical Services Co., Ltd.
Guangzhou Branch Technical Laboratory

Unless otherwise agreed in writing, this document is issued by the Company subject to its General Conditions of Service printed overleaf, available on request or accessible at <https://www.sgs.com/en/Terms-and-Conditions>. Attention is drawn to the limitation of liability, indemnification and jurisdiction issues defined therein. Any holder of this document is advised that information contained hereon reflects the Company's findings at the time of its intervention only and within the limits of Client's instructions, if any. The Company's sole responsibility is to its Client and this document does not exonerate parties to a transaction from exercising all their rights and obligations under the transaction documents. This document cannot be reproduced except in full, without prior written approval of the Company. Any unauthorized alteration, forgery or falsification of the content or appearance of this document is unlawful and offenders may be prosecuted to the fullest extent of the law. Unless otherwise stated the results shown in this test report refer only to the sample(s) tested.
Attention: To check the authenticity of testing /inspection report & certificate, please contact us at telephone: (86-755) 8307 1443, or email: CN.Doccheck@sgs.com

No.198, Kezhu Road, Science City, Economic & Technological Development Area, Guangzhou, Guangdong, China 510663
中国·广东·广州高新技术产业开发区科学城科珠路198号 邮编: 510663

t (86-20) 82155555 www.sgsgroup.com.cn
t (86-20) 82155555 sgs.china@sgs.com

Test Item(s)	A113	A114	A115	A116	A117	A118	A119	A120
Cd	BL	BL	BL	BL	BL	BL	BL	BL
Pb	<40000▲	BL	BL	BL	BL	BL	BL	BL
Hg	BL	BL	BL	BL	BL	BL	BL	BL
Cr(VI)▼	BL	BL	BL	BL	BL	BL	BL	BL
PBBs	---	BL	---	ND	---	ND	BL	BL
PBDEs	---	BL	---	ND	---	ND	BL	BL
DBP	---	ND	---	ND	---	ND	BL	ND
BBP	---	ND	---	ND	---	ND	BL	ND
DEHP	---	ND	---	ND	---	ND	BL	ND
DIBP	---	ND	---	ND	---	ND	BL	ND
Conclusion	PASS	PASS	PASS	PASS	PASS	PASS	PASS	PASS

Test Item(s)	A121	A122	A123	A124	A125	A126	A127	A128
Cd	BL	BL	BL	BL	BL	BL	BL	BL
Pb	BL	BL	BL	BL	BL	BL	BL	BL
Hg	BL	BL	BL	BL	BL	BL	BL	BL
Cr(VI)▼	BL	BL	BL	ND	BL	BL	BL	BL
PBBs	BL	BL	BL	---	ND	---	---	ND
PBDEs	BL	BL	BL	---	ND	---	---	ND
DBP	BL	ND	ND	---	ND	---	---	ND
BBP	BL	ND	ND	---	ND	---	---	ND
DEHP	BL	ND	ND	---	ND	---	---	ND
DIBP	BL	ND	ND	---	ND	---	---	ND
Conclusion	PASS	PASS	PASS	PASS	PASS	PASS	PASS	PASS

Test Item(s)	A129	A130	A131	A132	A133	A134	A135	A136
Cd	BL	BL	BL	BL	BL	BL	BL	BL
Pb	BL	BL	BL	BL	BL	BL	BL	BL
Hg	BL	BL	BL	BL	BL	BL	BL	BL
Cr(VI)▼	BL	BL	BL	BL	BL	BL	BL	BL
PBBs	BL	ND	BL	BL	BL	BL	BL	---
PBDEs	BL	ND	BL	BL	BL	BL	BL	---
DBP	ND	ND	BL	BL	BL	BL	BL	---
BBP	ND	ND	BL	BL	BL	BL	BL	---
DEHP	ND	ND	BL	BL	BL	BL	BL	---
DIBP	ND	ND	BL	BL	BL	BL	BL	---
Conclusion	PASS	PASS	PASS	PASS	PASS	PASS	PASS	PASS

Test Item(s)	A137	A138	A139	A140	A141	A142	A143	A144
Cd	BL	BL	BL	BL	BL	BL	BL	BL
Pb	BL	BL	BL	BL	BL	BL	OL▲	BL
Hg	BL	BL	BL	BL	BL	BL	BL	BL
Cr(VI)▼	BL	BL	BL	ND	BL	BL	BL	BL
PBBs	BL	BL	BL	---	BL	BL	BL	BL
PBDEs	BL	BL	BL	---	BL	BL	BL	BL



Unless otherwise agreed in writing, this document is issued by the Company subject to its General Conditions of Service printed overleaf, available on request or accessible at <https://www.sgs.com/en/Terms-and-Conditions>. Attention is drawn to the limitation of liability, indemnification and jurisdiction issues defined therein. Any holder of this document is advised that information contained hereon reflects the Company's findings at the time of its intervention only and within the limits of Client's instructions, if any. The Company's sole responsibility is to its Client and this document does not exonerate parties to a transaction from exercising all their rights and obligations under the transaction documents. This document cannot be reproduced except in full, without prior written approval of the Company. Any unauthorized alteration, forgery or falsification of the content or appearance of this document is unlawful and offenders may be prosecuted to the fullest extent of the law. Unless otherwise stated the results shown in this test report refer only to the sample(s) tested.

Attention: To check the authenticity of testing / inspection report & certificate, please contact us at telephone: (86-755) 8307 1443, or email: CN.Doccheck@sgs.com

SGS-CT Standards Technical Service Co., Ltd.
Guangzhou Branch Technical Laboratory

No.198, Kezhu Road, Science City, Economic & Technological Development Area, Guangzhou, Guangdong, China 510663
中国·广东·广州高新技术产业开发区科学城科珠路198号 邮编: 510663

t (86-20) 82155555 www.sgsgroup.com.cn
t (86-20) 82155555 sgs.china@sgs.com

Test Item(s)	A137	A138	A139	A140	A141	A142	A143	A144
DBP	ND	ND	ND	---	ND	BL	BL	BL
BBP	ND	ND	ND	---	ND	BL	BL	BL
DEHP	ND	ND	ND	---	ND	BL	BL	BL
DIBP	ND	ND	ND	---	ND	BL	BL	BL
Conclusion	PASS	PASS	PASS	PASS	PASS	PASS	PASS	PASS

Test Item(s)	A145	A146	A147	A148	A149
Cd	BL	BL	BL	BL	BL
Pb	OL▲	BL	BL	BL	BL
Hg	BL	BL	BL	BL	BL
Cr(VI)▼	BL	BL	BL	BL	ND
PBBs	BL	---	ND	---	---
PBDEs	BL	---	ND	---	---
DBP	BL	---	ND	---	---
BBP	BL	---	ND	---	---
DEHP	BL	---	ND	---	---
DIBP	BL	---	ND	---	---
Conclusion	PASS	PASS	PASS	PASS	PASS



SGS-CSTC Standards Technical Services Co., Ltd.
Guangzhou Branch / 广州分公司

Unless otherwise agreed in writing, this document is issued by the Company subject to its General Conditions of Service printed overleaf, available on request or accessible at <https://www.sgs.com/en/Terms-and-Conditions>. Attention is drawn to the limitation of liability, indemnification and jurisdiction issues defined therein. Any holder of this document is advised that information contained hereon reflects the Company's findings at the time of its intervention only and within the limits of Client's instructions, if any. The Company's sole responsibility is to its Client and this document does not exonerate parties to a transaction from exercising all their rights and obligations under the transaction documents. This document cannot be reproduced except in full, without prior written approval of the Company. Any unauthorized alteration, forgery or falsification of the content or appearance of this document is unlawful and offenders may be prosecuted to the fullest extent of the law. Unless otherwise stated the results shown in this test report refer only to the sample(s) tested.

Attention: To check the authenticity of testing / inspection report & certificate, please contact us at telephone: (86-755) 8307 1443, or email: CN.Doccheck@sgs.com

No.198, Kezhu Road, Science City, Economic & Technological Development Area, Guangzhou, Guangdong, China 510663
中国·广东·广州高新技术产业开发区科学城科珠路198号 邮编: 510663

t (86-20) 82155555 www.sgsgroup.com.cn
t (86-20) 82155555 sgs.china@sgs.com

Notes:

(1) Interpretation of screening results by X-ray fluorescence spectrometry (XRF):

(a) Screening limits in mg/kg for regulated elements in various matrices according to IEC 62321-1:2013 Annex A as below table.

Element	Polymer	Metal	Composite Materials
Cd	$BL \leq (70-3\sigma) < X < (130+3\sigma) \leq OL$	$BL \leq (70-3\sigma) < X < (130+3\sigma) \leq OL$	$LOD < X < (150+3\sigma) \leq OL$
Pb	$BL \leq (700-3\sigma) < X < (1300+3\sigma) \leq OL$	$BL \leq (700-3\sigma) < X < (1300+3\sigma) \leq OL$	$BL \leq (500-3\sigma) < X < (1500+3\sigma) \leq OL$
Hg	$BL \leq (700-3\sigma) < X < (1300+3\sigma) \leq OL$	$BL \leq (700-3\sigma) < X < (1300+3\sigma) \leq OL$	$BL \leq (500-3\sigma) < X < (1500+3\sigma) \leq OL$
Br	$BL \leq (300-3\sigma) < X$	Not applicable	$BL \leq (250-3\sigma) < X$
Cr	$BL \leq (700-3\sigma) < X$	$BL \leq (700-3\sigma) < X$	$BL \leq (500-3\sigma) < X$

(b) If the maximum allowed level restricts PBB/PBDE and Cr(VI) rather than Br and Cr, the exceptions are the XRF determinations of Br and Cr. If the quantitative results for the elements Br and/or are higher than the limit (for Br calculated based on the stoichiometry of Br in the most common congeners of PBB/PBDE), the sample is "inconclusive".

(c) Results are obtained by EDXRF for primary screening, LOD = Limit of Detection, BL = Below Limit, OL = Over Limit, IN (The symbol X marks the region) = Inconclusive, where further investigation is necessary, and further chemical testing by ICP-OES (for Cd, Pb, Hg), UV-Vis (for Cr(VI)) and GC-MS (for PBBs/PBDEs) are recommended to be performed.

(d) The EDXRF screening test for RoHS elements – The reading may be different to the actual content in the sample be of non-uniformity composition.

(2) Screening results of Phthalates (PHTH) are for primary screening, and further chemical testing by GC-MS (for DBP, BBP, DEHP and DIBP) are recommended to be performed if the concentration exceeds the below warning value (unit: mg/kg).

Test Items	CAS No.	Polymer/ Composite Materials
Dibutyl Phthalate (DBP)	84-74-2	$BL \leq 600 < X$
Benzylbutyl Phthalate (BBP)	85-68-7	$BL \leq 600 < X$
Bis(2-ethylhexyl) Phthalate (DEHP)	117-81-7	$BL \leq 600 < X$
Diisobutyl Phthalate (DIBP)	84-69-5	$BL \leq 600 < X$

(3) Interpretation of results by chemical tests:

(a) mg/kg = 0.0001%, MDL = Method detection Limit, ND = Not Detected (<MDL), --- = Not Applicable.

(b) Unit and MDL in wet chemical test

Test Items	Pb	Cd	Hg	DBP	BBP	DEHP	DIBP
Unit	mg/kg	mg/kg	mg/kg	mg/kg	mg/kg	mg/kg	mg/kg
MDL	10	10	10	100	100	100	100

The MDL for single compound of PBBs and PBDEs is 100 mg/kg,

MDL of Cr(VI) for polymer, composite and leather sample is 10 mg/kg.

MDL of Cr(VI) for metal sample is 0.10 $\mu\text{g}/\text{cm}^2$.

(c) ▼ = Metal sample

a. The sample is positive for Cr(VI) if the Cr(VI) concentration is greater than 0.13 $\mu\text{g}/\text{cm}^2$. The sample coating is considered to contain Cr(VI).

b. The sample is negative for Cr(VI) if Cr(VI) is ND (concentration less than 0.10 $\mu\text{g}/\text{cm}^2$). The coating is considered a non-Cr(VI) based coating

c. The result between 0.10 $\mu\text{g}/\text{cm}^2$ and 0.13 $\mu\text{g}/\text{cm}^2$ is considered to be inconclusive-unavoidable coating variations may influence the determination



SGS-CST Standards Technical Service Co., Ltd.
Guangzhou Branch: Standards Technical Laboratory

Unless otherwise agreed in writing, this document is issued by the Company subject to its General Conditions of Service printed overleaf, available on request or accessible at <https://www.sgs.com/en/Terms-and-Conditions>. Attention is drawn to the limitation of liability, indemnification and jurisdiction issues defined therein. Any holder of this document is advised that information contained hereon reflects the Company's findings at the time of its intervention only and within the limits of Client's instructions, if any. The Company's sole responsibility is to its Client and this document does not exonerate parties to a transaction from exercising all their rights and obligations under the transaction documents. This document cannot be reproduced except in full, without prior written approval of the Company. Any unauthorized alteration, forgery or falsification of the content or appearance of this document is unlawful and offenders may be prosecuted to the fullest extent of the law. Unless otherwise stated the results shown in this test report refer only to the sample(s) tested.
Attention: To check the authenticity of testing / inspection report & certificate, please contact us at telephone: (86-755) 8307 1443, or email: CN.Doccheck@sgs.com

No.198, Kezhu Road, Science City, Economic & Technological Development Area, Guangzhou, Guangdong, China 510663
中国·广东·广州高新技术产业开发区科学城科珠路198号 邮编: 510663

t (86-20) 82155555 www.sgsgroup.com.cn
t (86-20) 82155555 sgs.china@sgs.com

Information on storage conditions and production date of the tested sample is unavailable and thus Cr(VI) results represent status of the sample at the time of testing.

(4) Restricted substances and maximum concentration values tolerated by weight in homogeneous materials under RoHS Directive: Cd: 0.01%, Pb/Hg/Cr(VI)/PBBs/PBDEs/DEHP/DBP/BBP/DIBP: 0.1%. The limit is quoted from RoHS Directive (EU) 2015/863.

(5) IEC 62321 series is equivalent to EN 62321 series.

(6) ▲=According to the declaration from the client,

Lead (Pb) in No.A25, No.A26, No.A104, No.A105, No.A111, No.A113 are exempted by EU RoHS directive 2011/65/EU based on [ANNEX III 6(c)]: Copper alloy containing up to 4 % lead by weight.

Lead (Pb) in No.A143, No.A145 are exempted by EU RoHS directive 2011/65/EU based on [ANNEX III 7(c)-II]: Electrical and electronic components containing lead in a glass or ceramic other than dielectric ceramic in capacitors, e.g. piezoelectronic devices, or in a glass or ceramic matrix compound.

Unless otherwise stated, the decision rule for conformity reporting is based on Binary Statement for Simple Acceptance Rule ($w=0$) stated in ILAC-G8:09/2019.



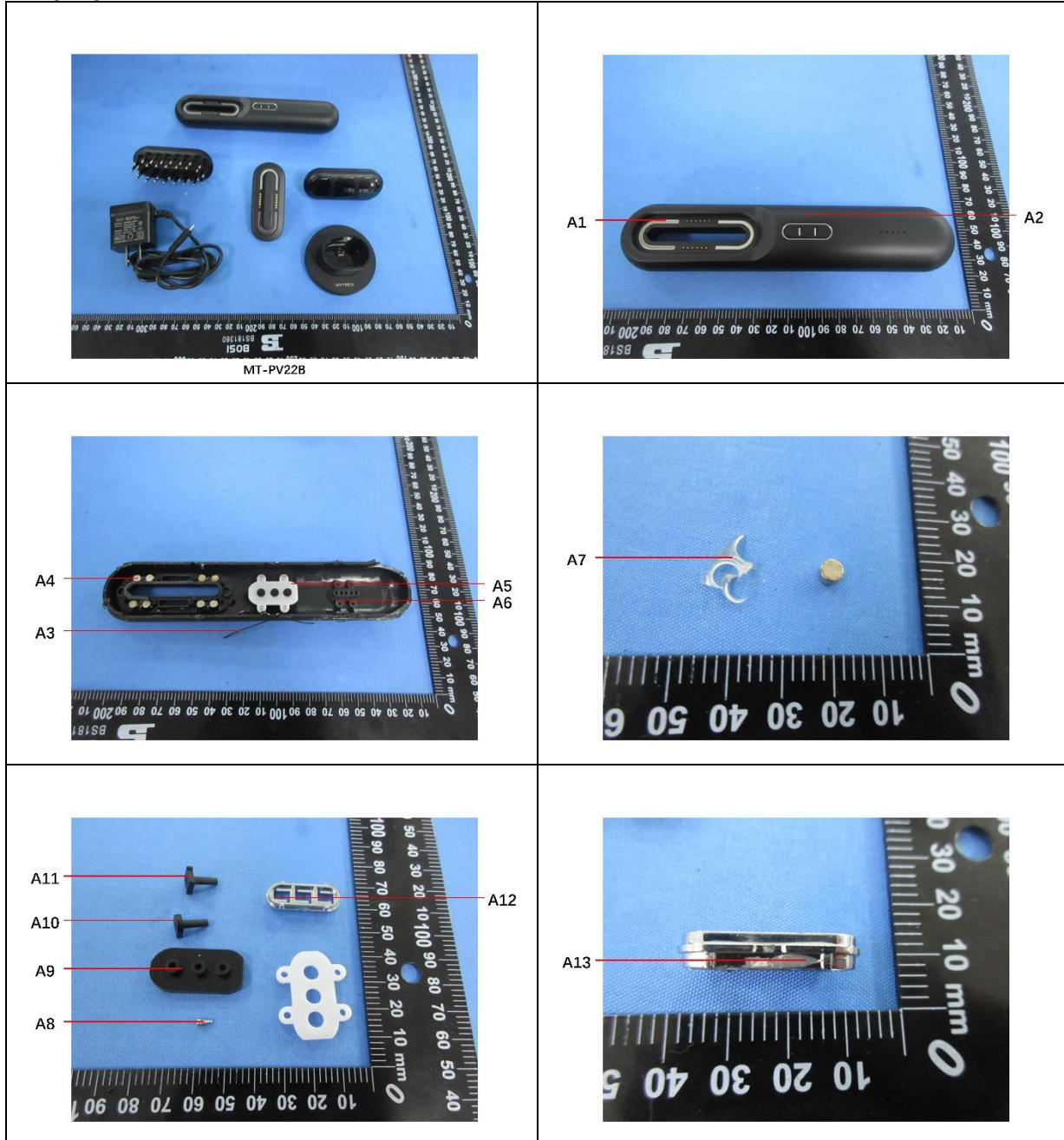
SGS-CSTC Standards Technical Services Co., Ltd.
Guangzhou Branch, Science City, Economic & Technological Development Area, Guangzhou, Guangdong, China 510663

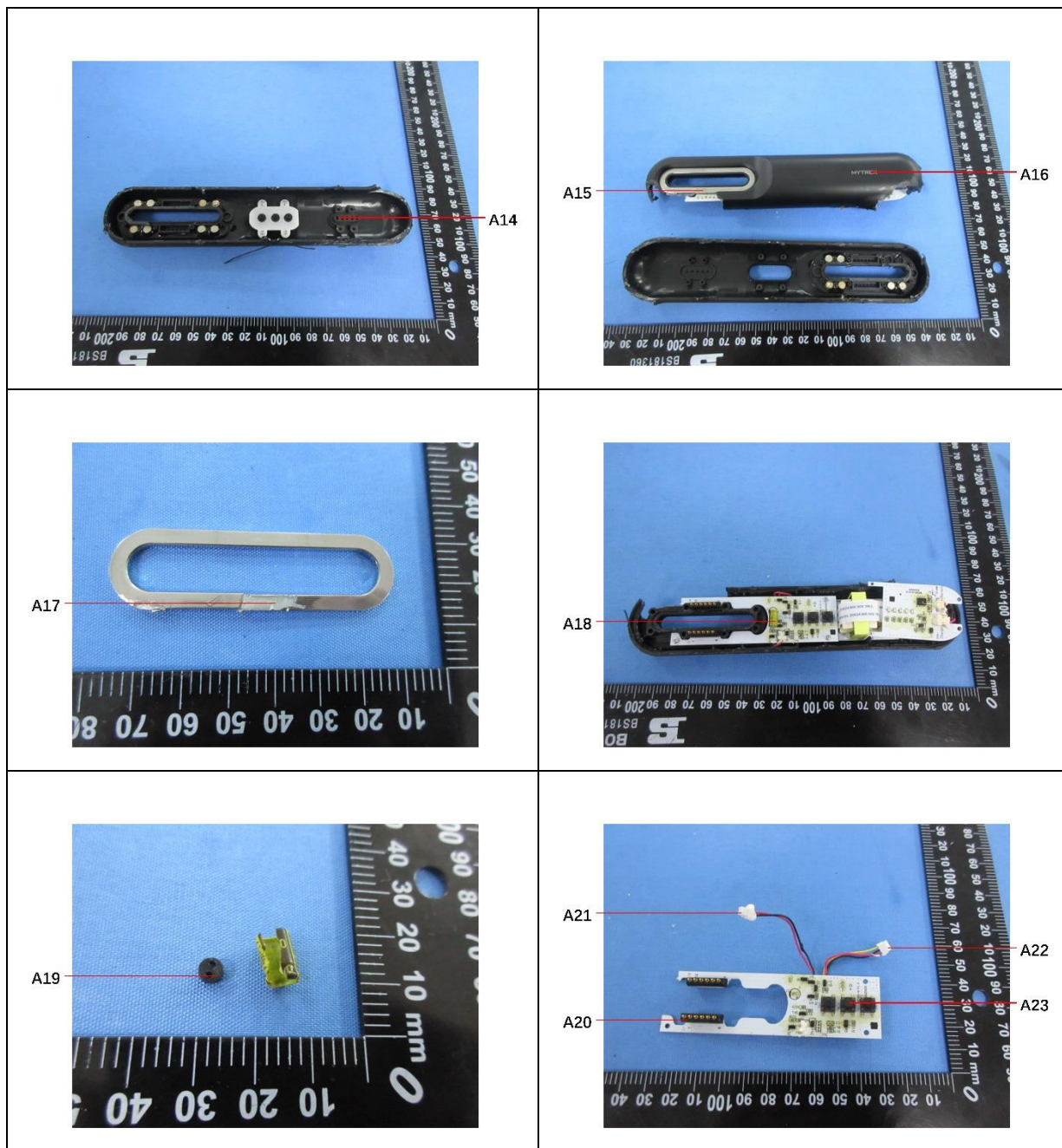
Unless otherwise agreed in writing, this document is issued by the Company subject to its General Conditions of Service printed overleaf, available on request or accessible at <https://www.sgs.com/en/Terms-and-Conditions>. Attention is drawn to the limitation of liability, indemnification and jurisdiction issues defined therein. Any holder of this document is advised that information contained hereon reflects the Company's findings at the time of its intervention only and within the limits of Client's instructions, if any. The Company's sole responsibility is to its Client and this document does not exonerate parties to a transaction from exercising all their rights and obligations under the transaction documents. This document cannot be reproduced except in full, without prior written approval of the Company. Any unauthorized alteration, forgery or falsification of the content or appearance of this document is unlawful and offenders may be prosecuted to the fullest extent of the law. Unless otherwise stated the results shown in this test report refer only to the sample(s) tested.
Attention: To check the authenticity of testing /inspection report & certificate, please contact us at telephone: (86-755) 8307 1443, or email: CN.Doccheck@sgs.com

No.198, Kezhu Road, Science City, Economic & Technological Development Area, Guangzhou, Guangdong, China 510663
中国·广东·广州高新技术产业开发区科学城科珠路198号 邮编: 510663

t (86-20) 82155555 www.sgsgroup.com.cn
t (86-20) 82155555 sgs.china@sgs.com

Sample photos:





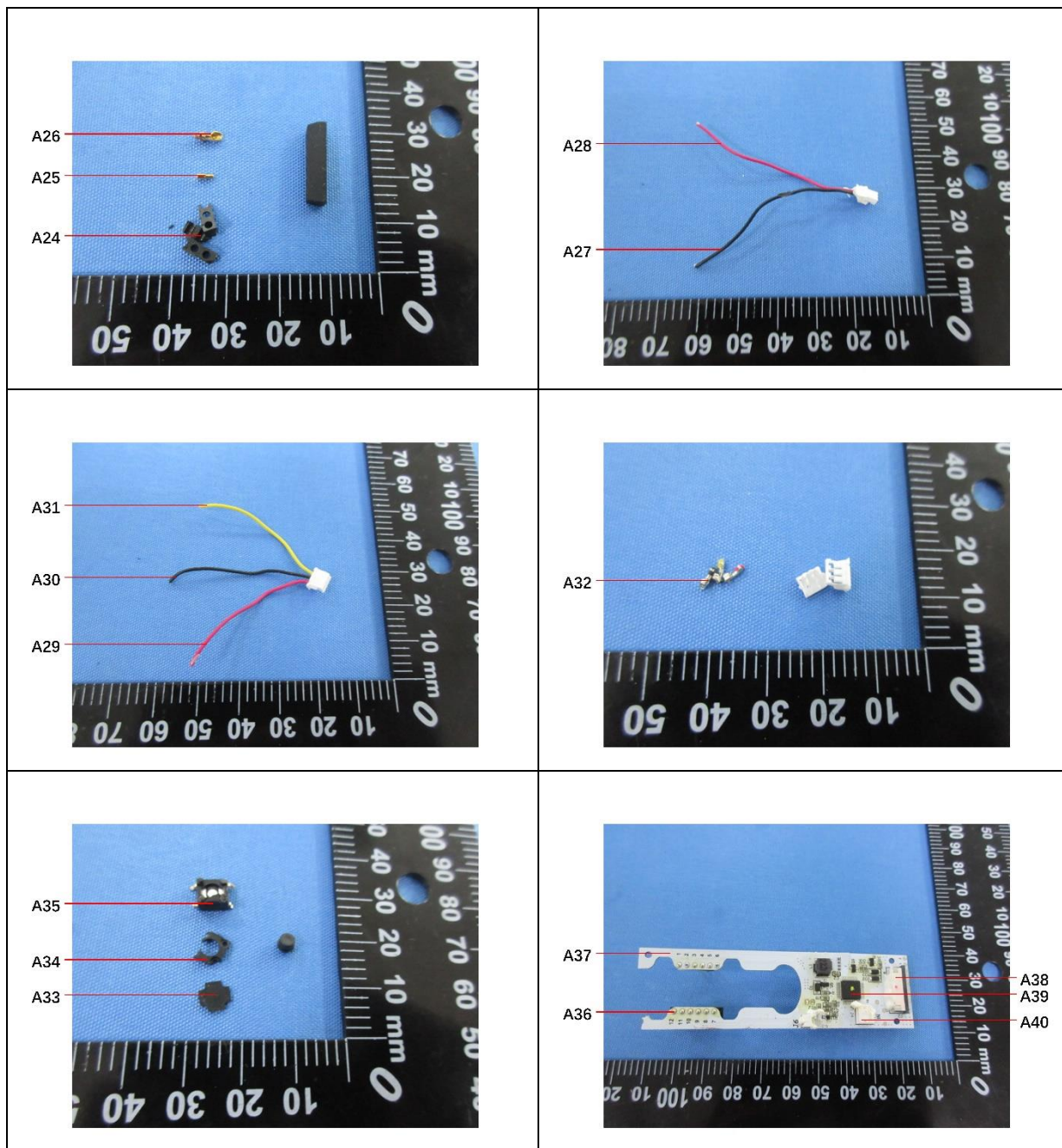
Unless otherwise agreed in writing, this document is issued by the Company subject to its General Conditions of Service printed overleaf, available on request or accessible at <https://www.sgs.com/en/Terms-and-Conditions>. Attention is drawn to the limitation of liability, indemnification and jurisdiction issues defined therein. Any holder of this document is advised that information contained hereon reflects the Company's findings at the time of its intervention only and within the limits of Client's instructions, if any. The Company's sole responsibility is to its Client and this document does not exonerate parties to a transaction from exercising all their rights and obligations under the transaction documents. This document cannot be reproduced except in full, without prior written approval of the Company. Any unauthorized alteration, forgery or falsification of the content or appearance of this document is unlawful and offenders may be prosecuted to the fullest extent of the law. Unless otherwise stated the results shown in this test report refer only to the sample(s) tested.

Attention: To check the authenticity of testing / inspection report & certificate, please contact us at telephone: (86-755) 8307 1443, or email: CN.Doccheck@sgs.com

SGS-CTI Standards Technical Services Co., Ltd.
Guangzhou Branch Technical Laboratory

No.198, Kezhu Road, Science City, Economic & Technological Development Area, Guangzhou, Guangdong, China 510663
中国·广东·广州高新技术产业开发区科学城科珠路198号 邮编: 510663

t (86-20) 82155555 www.sgsgroup.com.cn
t (86-20) 82155555 sgs.china@sgs.com



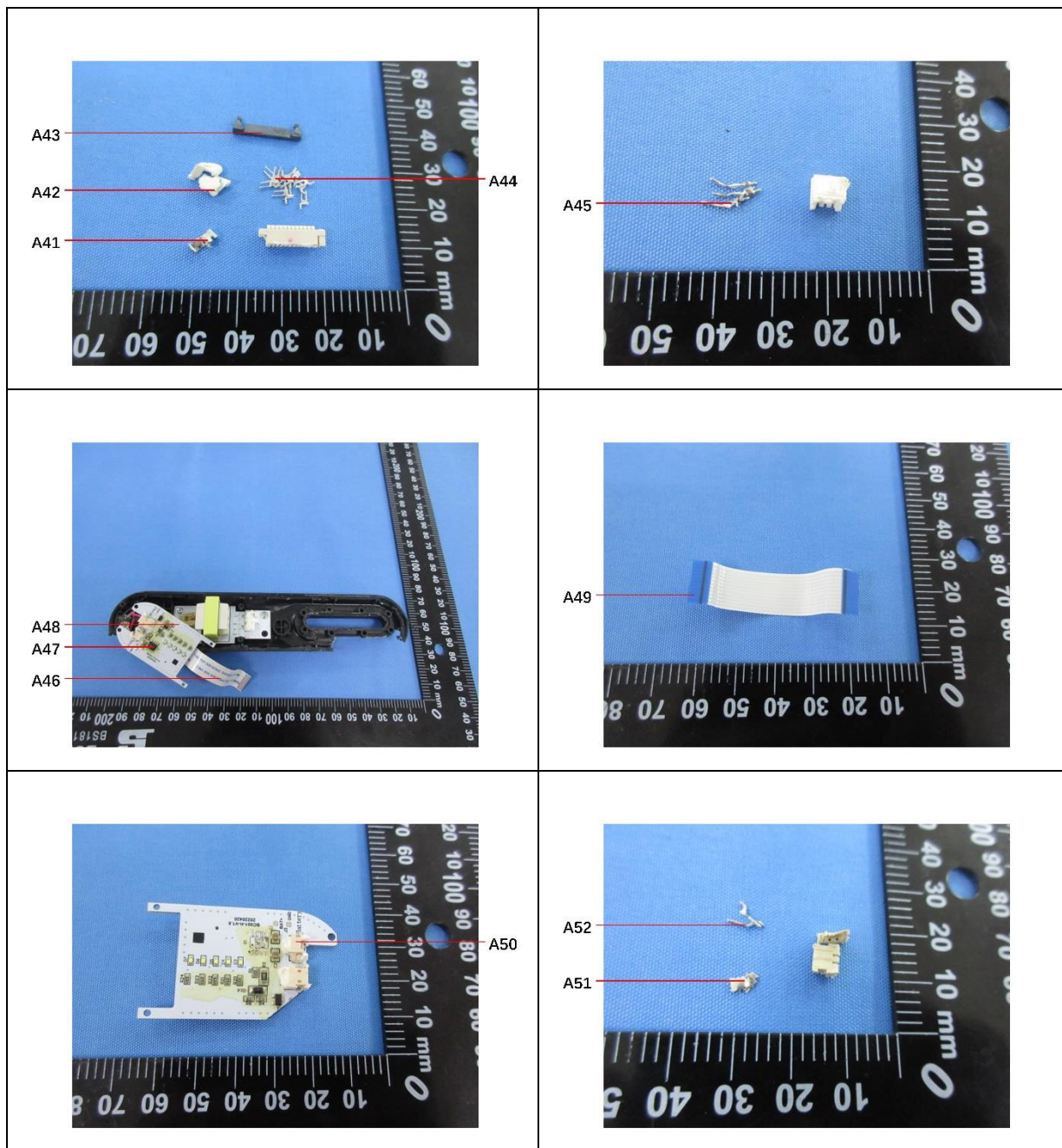
Unless otherwise agreed in writing, this document is issued by the Company subject to its General Conditions of Service printed overleaf, available on request or accessible at <https://www.sgs.com/en/Terms-and-Conditions>. Attention is drawn to the limitation of liability, indemnification and jurisdiction issues defined therein. Any holder of this document is advised that information contained hereon reflects the Company's findings at the time of its intervention only and within the limits of Client's instructions, if any. The Company's sole responsibility is to its Client and this document does not exonerate parties to a transaction from exercising all their rights and obligations under the transaction documents. This document cannot be reproduced except in full, without prior written approval of the Company. Any unauthorized alteration, forgery or falsification of the content or appearance of this document is unlawful and offenders may be prosecuted to the fullest extent of the law. Unless otherwise stated the results shown in this test report refer only to the sample(s) tested.

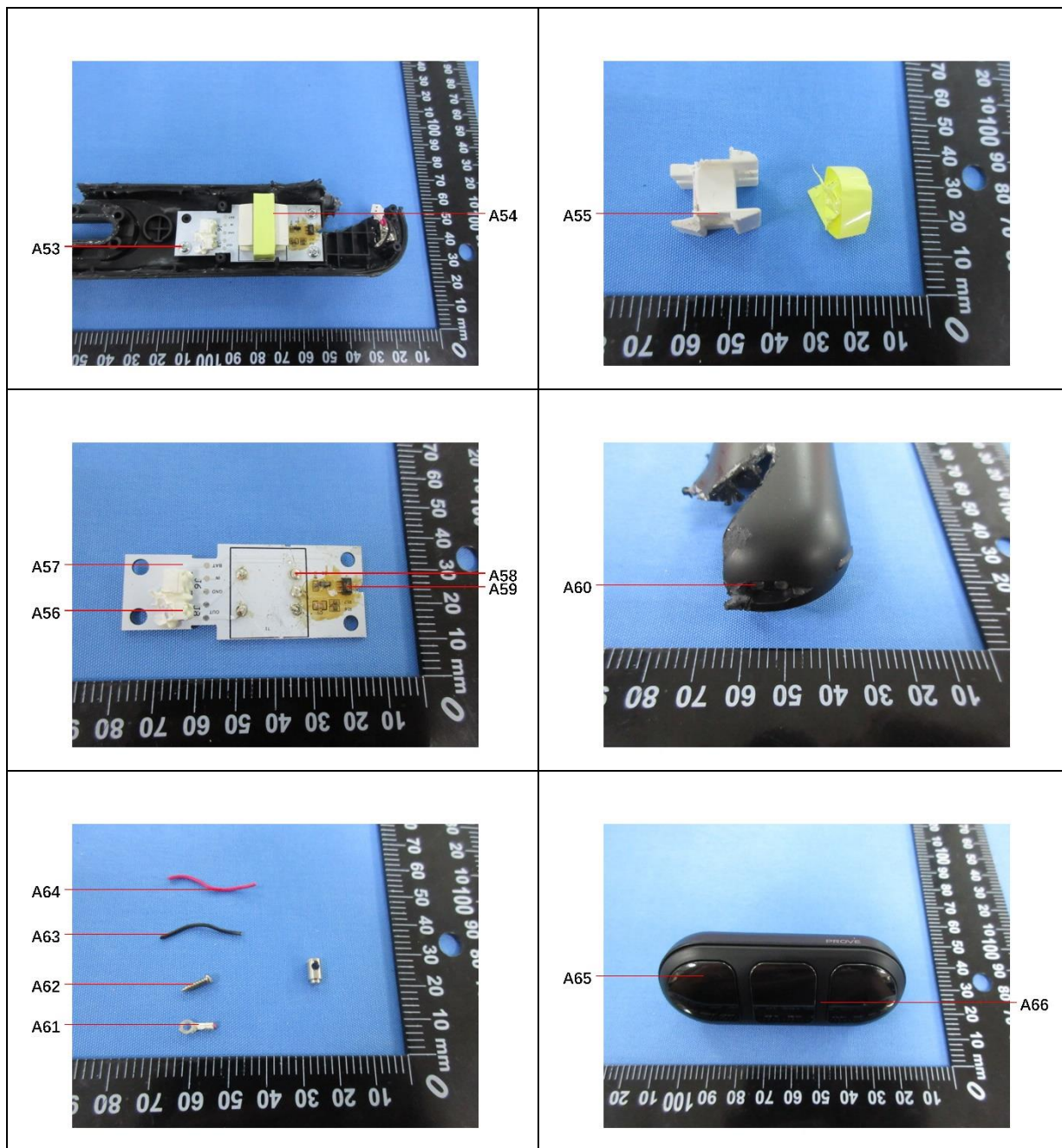
Attention: To check the authenticity of testing /inspection report & certificate, please contact us at telephone: (86-755) 8307 1443, or email: CN.Doccheck@sgs.com

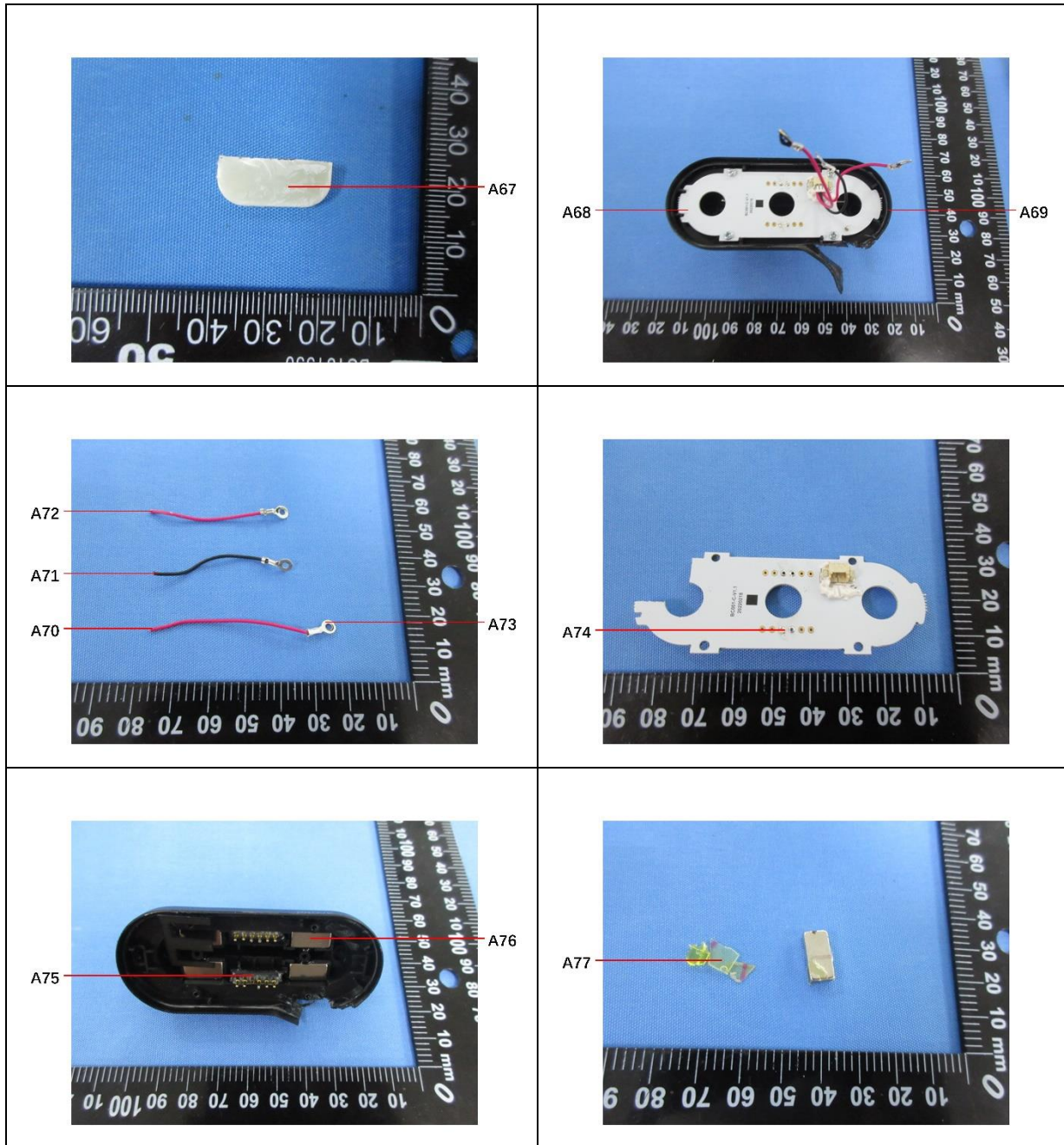
SGS-CTI Standards Technical Services Co., Ltd.
Guangzhou Branch Technical Laboratory

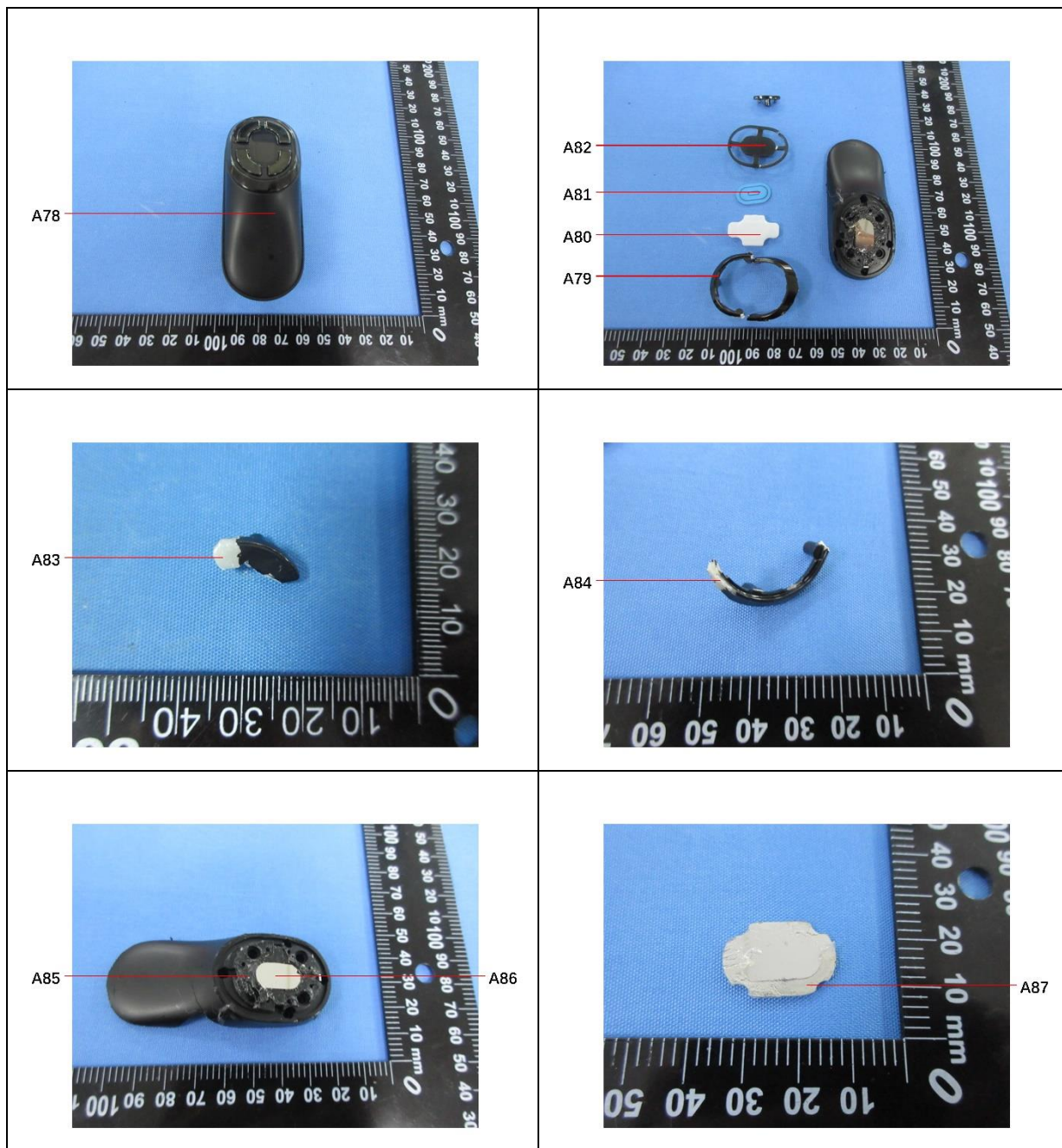
No.198, Kezhu Road, Science City, Economic & Technological Development Area, Guangzhou, Guangdong, China 510663
中国·广东·广州高新技术产业开发区科学城科珠路198号 邮编: 510663

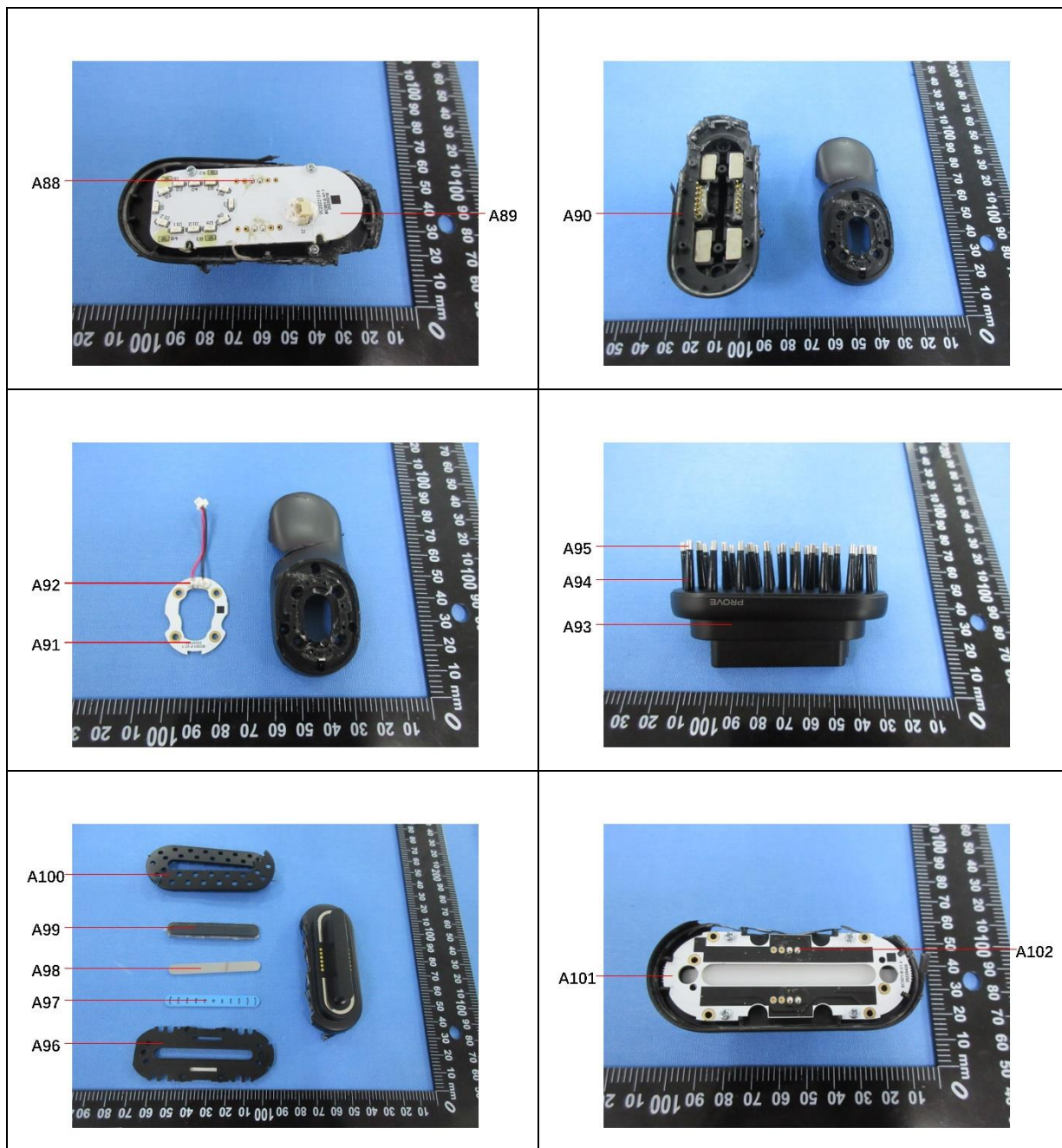
t (86-20) 82155555 www.sgsgroup.com.cn
t (86-20) 82155555 sgs.china@sgs.com

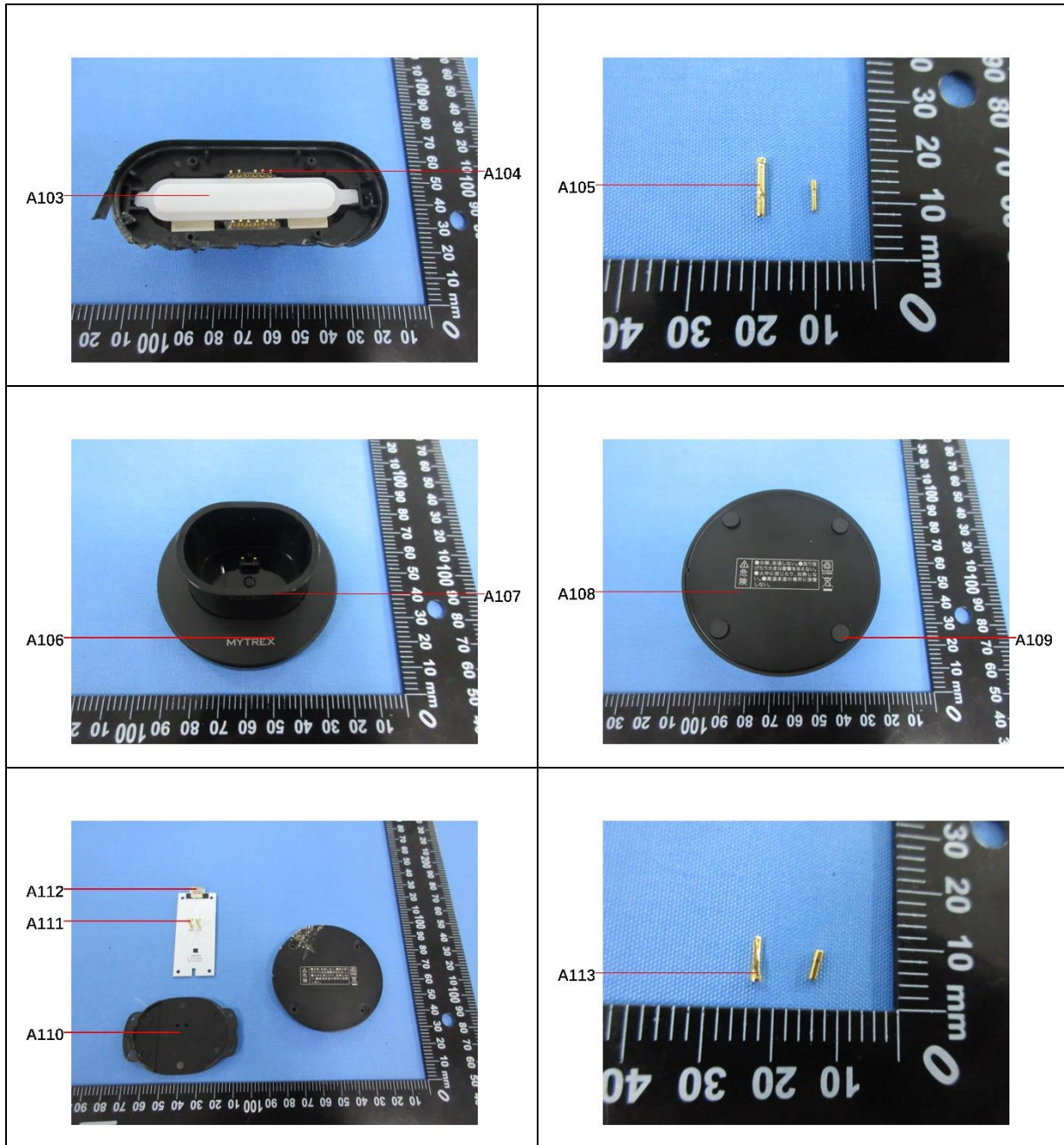


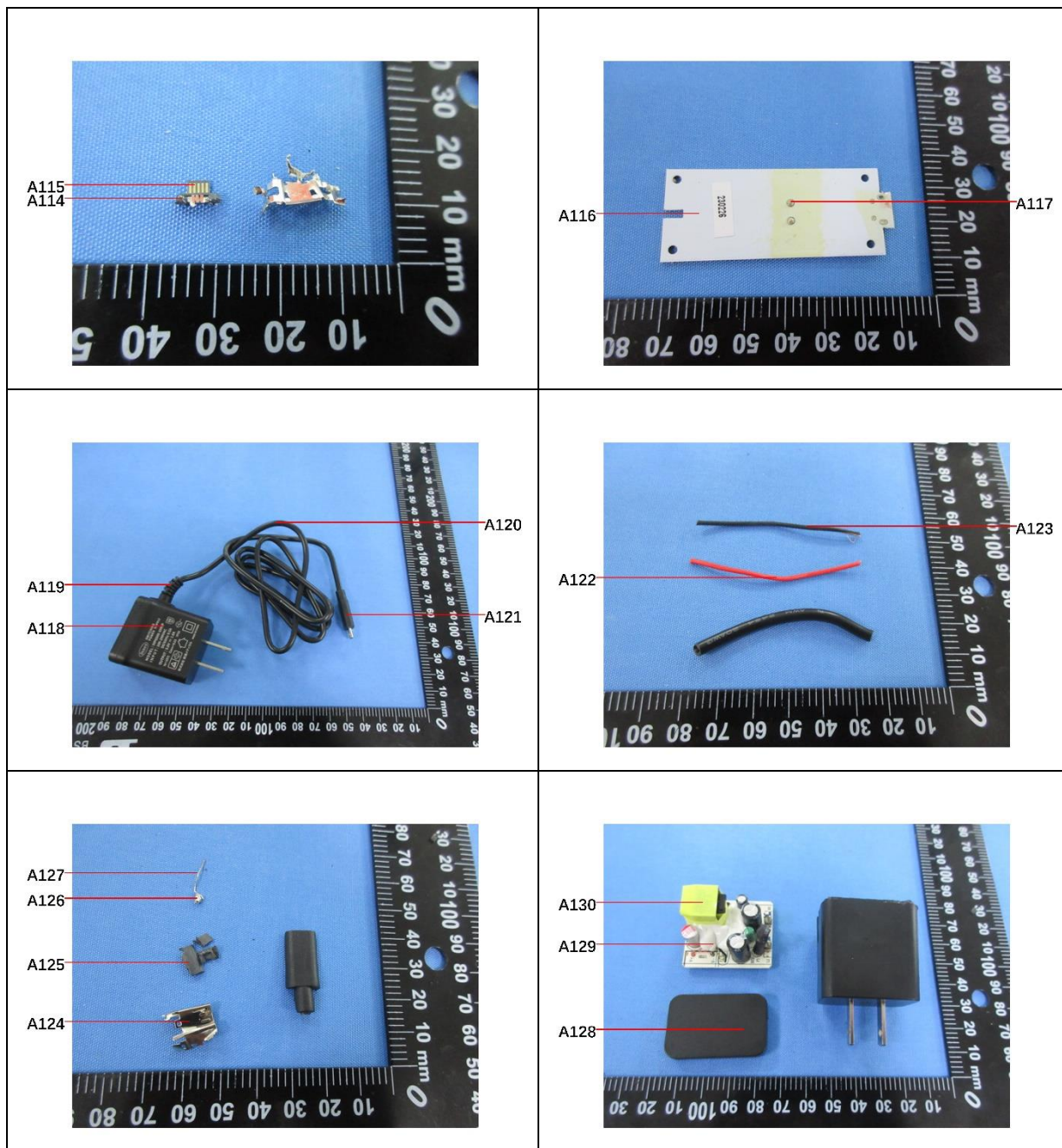












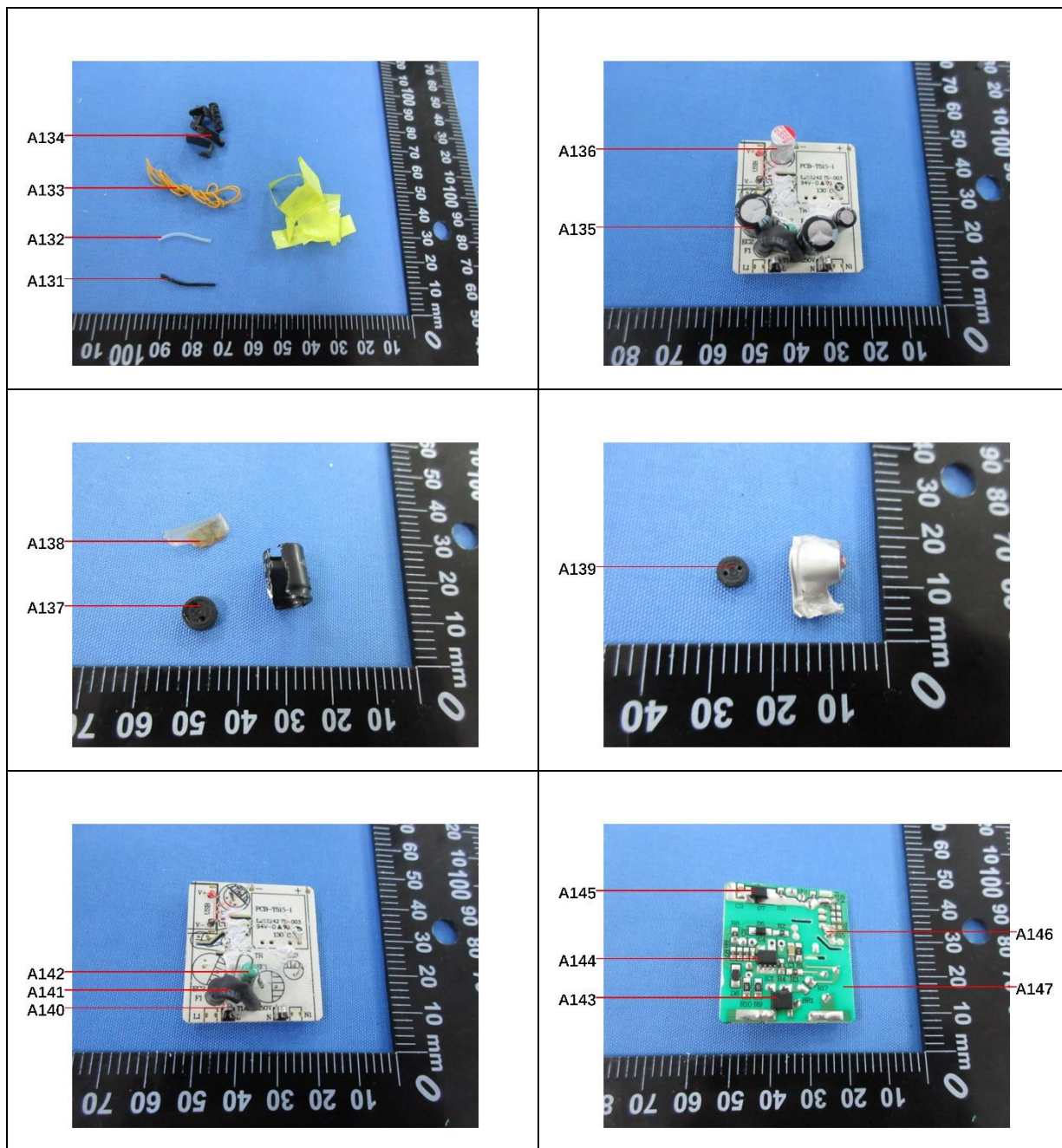
Unless otherwise agreed in writing, this document is issued by the Company subject to its General Conditions of Service printed overleaf, available on request or accessible at <https://www.sgs.com/en/Terms-and-Conditions>. Attention is drawn to the limitation of liability, indemnification and jurisdiction issues defined therein. Any holder of this document is advised that information contained hereon reflects the Company's findings at the time of its intervention only and within the limits of Client's instructions, if any. The Company's sole responsibility is to its Client and this document does not exonerate parties to a transaction from exercising all their rights and obligations under the transaction documents. This document cannot be reproduced except in full, without prior written approval of the Company. Any unauthorized alteration, forgery or falsification of the content or appearance of this document is unlawful and offenders may be prosecuted to the fullest extent of the law. Unless otherwise stated the results shown in this test report refer only to the sample(s) tested.

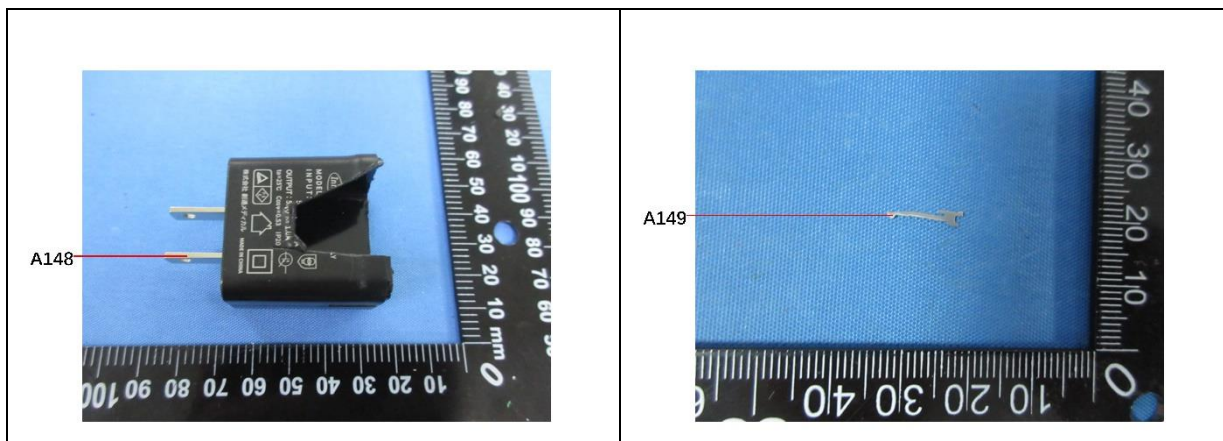
Attention: To check the authenticity of testing / inspection report & certificate, please contact us at telephone: (86-755) 8307 1443, or email: CN.Doccheck@sgs.com

SGS-CTI Standards Technical Services Co., Ltd.
Guangzhou Branch Technical Laboratory

No.198, Kezhu Road, Science City, Economic & Technological Development Area, Guangzhou, Guangdong, China 510663
中国·广东·广州高新技术产业开发区科学城科珠路198号 邮编: 510663

t (86-20) 82155555 www.sgsgroup.com.cn
t (86-20) 82155555 sgs.china@sgs.com





SGS authenticate the photo on original report only
 *** End of Report ***



SGS-CSTC Standards Technical Services Co., Ltd.
 Inspection & Testing Services
 Guangzhou Branch Technical Laboratory

Unless otherwise agreed in writing, this document is issued by the Company subject to its General Conditions of Service printed overleaf, available on request or accessible at <https://www.sgs.com/en/Terms-and-Conditions>. Attention is drawn to the limitation of liability, indemnification and jurisdiction issues defined therein. Any holder of this document is advised that information contained hereon reflects the Company's findings at the time of its intervention only and within the limits of Client's instructions, if any. The Company's sole responsibility is to its Client and this document does not exonerate parties to a transaction from exercising all their rights and obligations under the transaction documents. This document cannot be reproduced except in full, without prior written approval of the Company. Any unauthorized alteration, forgery or falsification of the content or appearance of this document is unlawful and offenders may be prosecuted to the fullest extent of the law. Unless otherwise stated the results shown in this test report refer only to the sample(s) tested.
 Attention: To check the authenticity of testing / inspection report & certificate, please contact us at telephone: (86-755) 8307 1443, or email: CN.Doccheck@sgs.com

No.198, Kezhu Road, Science City, Economic & Technological Development Area, Guangzhou, Guangdong, China 510663
 中国·广东·广州高新技术产业开发区科学城科珠路198号 邮编: 510663

t (86-20) 82155555 www.sgsgroup.com.cn
 t (86-20) 82155555 sgs.china@sgs.com